

Chapter 1 Summary of major investigation activities in 2024

When an aircraft, railway, or marine accident occurs, the JTSB designates an accident investigator in charge of investigating the accident, etc., designates an investigator from among them, and begins an investigation into the cause of the occurrence, etc. Since we can never know when or where accidents may occur, the personnel of the Board, including accident investigators, are making continuous efforts to be able to conduct investigation activities immediately when accidents should occur.

Accident investigators conduct investigations and invite comments from parties relevant to the cause of the accident; accordingly, they make draft recommendations or opinions regarding the measures to be taken to prevent the recurrence of accidents and to mitigate damage caused by accidents. Therefore, they shall endeavor to improve their level of skill and knowledge by participating in national and international training; moreover, they share accident information among international society by attending international conferences.

Based on the results of our investigations, who will also make recommendations and state our opinions as necessary to related government institutions and parties relevant to the causes of accidents, the JTSB will continue to contribute to prevent the recurrence of accidents, etc. and reduce damages.

[Regarding recommendations and opinions, see “Chapter 2. Summary of recommendations and opinions issued” (page 28).]

1 Major accidents and serious incidents occurred in 2024, for which investigations commenced

Several accidents and serious incidents had occurred and investigations had been launched in 2024. The primary investigations which the JTSB commenced are listed below:

(1) Aviation mode

- **Accident involving collision of a Bombardier DHC-8-315 (large aeroplane) of the Japan Coast Guard and an Airbus A350-941 (large aeroplane) of Japan Airlines Co., Ltd. on the Tokyo International Airport runway (Occurred on January 2)**
- **Accident involving damage to a Textron Aviation G58 (small aeroplane) of (School organization) Hiratagakuen due to fuselage landing on the Kobe Airport runway (Occurred on May 31)**
- **Accident involving serious injury caused by a company-owned EAMS Robotics Co., Ltd.'s UAV-E6150FA (small UA, multi-rotor) in Minamisoma City, Fukushima Prefecture (Occurred on June 21)**
- **Crash accident of a Robinson R44II (rotorcraft) of SGC Saga Aviation Co., Ltd. in Yanagawa City, Fukushima Prefecture (Occurred on July 28)**
- **Accident involving damage to a Boeing 747-400F (large aeroplane) of Atlas Air Inc. on runway A at Narita International Airport during the takeoff (Occurred on August 12)**

There were 19 railway accidents investigated, with investigations into the causes of 48 accidents conducted, including 29 ongoing accident investigations from the previous year. In addition, there were 16 serious incidents investigated, with investigations into the causes of 34 serious incidents conducted,

including 18 ongoing serious incident investigations from the previous year.

(2) Railway mode

- **Train derailment in the premises of Shin-Yamaguchi Station on the Sanyo Line of the Japan Freight Railway Co., Ltd. (Yamaguchi City, Yamaguchi Prefecture) (Occurred on July 24)**
- **Serious Incident (train car failure) in the premises of Shin-Suizenji Station on the Suizenji Line of the Kumamoto City Transportation Bureau (Kumamoto City, Kumamoto Prefecture) (Occurred on September 2)**
- **Train derailment between Mori Station and Ishiya Signal Yard on the Hakodate Line of the Japan Freight Railway Company (Mori-machi, Kayabe-gun, Hokkaido) (Occurred on November 16)**
- **Other accidents with casualties in the premises of Takatsuka Station on the Tokaido Line of the Central Japan Railway Company (Hamamatsu City, Shizuoka Prefecture) (Occurred on December 10)**
- **Train derailment in the premises of Sendai Station on the Kagoshima Line of the Japan Freight Railway Company (Satsumasendai City, Kagoshima Prefecture) (Occurred on December 12)**

There were 10 railway accidents investigated, with investigations into the causes of 20 accidents conducted, including 10 ongoing accident investigations from the previous year. In addition, there were 5 serious railway incidents investigated, with investigations into the causes of 8 accidents conducted, including 3 ongoing accident investigations from the previous year.

(3) Marine mode

- **Capsizing of Towed Ship 13 in the Shimizu Port Orito Bay (Occurred on January 16)**
- **Capsizing of a chemical tanker KEOYOUNG SUN off Mutsurejima Island, Shimonoseki City, Yamaguchi Prefecture (Occurred on March 20)**
- **Injury and Fatality of Stevedores of a cargo ship EVER FELICITY at Ishinomaki Port, Ishinomaki City, Miyagi Prefecture (Occurred on May 20)**
- **Collision of a passenger ship and car ferry Silver Breeze (with tetrapods) at Tomakomai Port, Tomakomai City, Hokkaido (Occurred on July 2)**
- **Collision of a sports fishing boat Daini Ai Maru (with tetrapods) at Sakaiminato (Occurred on July 28)**

There were 610 marine accidents investigated, with investigations into the causes of 1,214 accidents conducted, including 604 ongoing accident investigations from the previous year. In addition, there were 94 marine incidents investigated, with investigations into the causes of 148 accidents conducted, including 242 ongoing accident investigations from the previous year.

2 Major accidents and serious incidents for which investigation reports were published in 2024

Completed investigations into the causes of accidents and incidents undergo committee

(subcommittee) review/resolution. Investigation reports were submitted to the Minister of Land, Infrastructure, Transport, and Tourism and published on the JTSB website. Major accidents and incidents, for which the investigation reports published on the website, are as follows.

(1) Aviation mode

- Accident involving injury to passengers and damage to an Agusta AW139 (rotorcraft) of the Fukushima Prefectural Police Aviation Unit caused by hard landing in Koriyama City, Fukushima Prefecture (Occurred on February 1, 2020)
- Crash of a Beechcraft A36 (small aeroplane) of the NPO Mesh Support at Iejima Airport, Okinawa Prefecture (Occurred on March 12, 2022)
- Aircraft damage due to the collision of a Boeing 767-300 (large aeroplane) of All Nippon Airways Co., Ltd. with a vehicle on the apron at Narita International Airport (Occurred on January 25, 2023)
- Accident involving serious injury caused by a privately owned Sami Sami Lab's SAMI SAMI AGV2 (small UA, multi-rotor) in Kokonoe Town, Kusu District, Oita Prefecture (Occurred on July 14, 2023)
- Serious incident of a Boeing 737-800 (large aeroplane) of China Postal Airlines LLC that attempted to land on a runway in use by other aircraft on runway B at Kansai International Airport (Occurred on July 20, 2023)

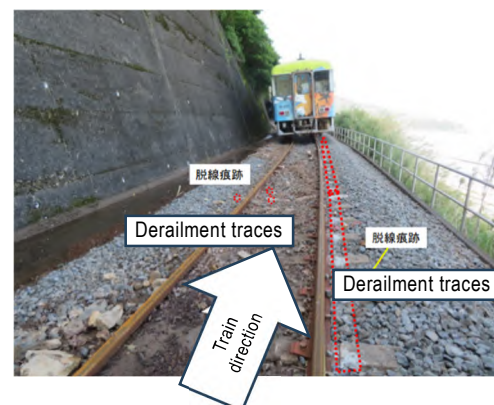


Rollover of the Accident Helicopter
Agusta AW139 of the Fukushima Prefectural Police Aviation Unit

Completed investigation reports into 14 aircraft accidents and 7 serious aircraft incidents, we have been reported to the Minister and have been published investigation reports.

(2) Railway mode

- Train derailment between Fukushima Station and Shiroishi-Zao Station on the Tohoku Shinkansen Line of the East Japan Railway Company (Shiroishi City, Miyagi Prefecture) (Occurred on March 16, 2022)
- Serious incident (train car failure) between Bungo-Ogi Station and Tamarai Station in Hohi Line of Kyushu Railway Company (Taketa City, Oita Prefecture) (Occurred on October 17, 2022)
- Train derailment between Ariigawa Station and Tosa-Shirahama Station on the Nakamura Line of the Tosa Kuroshio Railway (Kuroshio-cho, Hata District, Kochi Prefecture) (Occurred on June 2, 2023)
- Other accidents with casualties in the premises of Ofuna Station on the Tokaido Line of East Japan Railway Company (Kamakura



Train derailment accident of Tosa Kuroshio Tetsudo Railway

City, Kanagawa Prefecture) (Occurred on August 5, 2023)

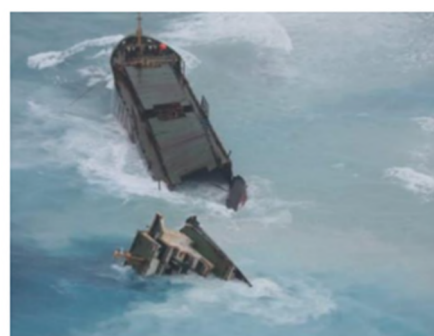
- **Serious incident (train car failure) between Kotsukyoku-mae Station and Miso Tenjinmae Station in the Suizenji Line of the Kumamoto City Transportation Bureau (Kumamoto City, Kumamoto Prefecture) (Occurred on January 5, 2024)**

Completed investigation reports into 7 railway accidents and 3 serious railway incidents have been reported to the Minister and have been published.

Regarding the train derailment between Ariigawa Station and Tosa-Shirahama Station on the Nakamura Line of the Tosa Kuroshio Railway (Kuroshio-cho, Hata District, Kochi Prefecture) published in the investigation report, a recommendation was made to Tosa Kuroshio Tetsudo Co., Ltd. on July 25. (Please refer to Chapter 2, “Summary of recommendations and opinions” on page 29.)

(3) Marine mode

- **Collision between the cargo ship GUO XING 1 and the fishing vessel TOMI MARU No.8 off the east coast of Nakayamazaki, Rokkasho-mura, Aomori Prefecture (Occurred on February 29, 2020)**
- **Accident involving damage to container loading platforms of a container ship ONE APUS off the northwest coast of the Hawaiian Islands, United States (Occurred on November 30, 2020)**
- **Grounding of the cargo ship XIN HAI ZHOU 2 off the northwest coast of Taketomi Island, Taketomi Town, Okinawa Prefecture (Occurred on January 24, 2023)**
- **Capsizing accident of a passenger ship NO. 9 on the Hozugawa River at the mountain behind Oji, Shino Town, Kameoka City, Kyoto Prefecture (Occurred on March 28, 2023)**
- **Capsizing of a diving ship Crystal M off the northwest coast of Shimoji Island, Miyakojima City, Okinawa Prefecture (Occurred on August 16, 2023)**



Provided by the Japan Coast Guard

Grounding of a cargo ship XIN HAI ZHOU 2

Completed investigation reports into 638 marine accidents and 162 marine incidents, we have been reported to the Minister and have been published investigation reports.

Regarding the grounding of the cargo ship XIN HAI ZHOU 2 published in the investigation report, a safety recommendation was made to GRAND VOYAGE MARINE CO., LTD. and the Panama Maritime Authority on March 28.

In addition, regarding the flood accident of a fishing ship Kaiko Maru, an opinion was expressed to the Director-General of the Fisheries Agency on March 28.

(Please refer to Chapter 2, “Summary of recommendations and opinions” on pages 31-32.)

3 Major accidents and serious incidents for which progress reports were published in 2024

In cases where an investigation into an accident is prolonged, the JTSB will report the progress of the

investigation to the Minister of Land, Infrastructure, Transport and Tourism and make it public even before the investigation is completed. In 2024, the JTSB published progress reports on 18 aircraft-related cases, 5 railway-related cases, and 3 marine-related cases (limited to cases where the investigation continued into 2025). The main ones are as follows:

(1) Aviation mode

- **Collision between a Bombardier DHC-8-315 (large aeroplane) of the Japan Coast Guard and an Airbus A350-941 (large aeroplane) of Japan Airlines Co., Ltd. on the runway at Tokyo International Airport (Occurred on January 2, 2024)**

Date of publication of the progress report: December 25, 2024

Contents of the progress report: 1. Process and progress of the aircraft accident investigation
2. Factual information
3. Direction of future investigation and analysis

This progress report has been published on the JTSB website.

https://jtsb.mlit.go.jp/aircraft/rep-acci/keika20241225-JA722A_JA13XJ.pdf (Japanese)

https://jtsb.mlit.go.jp/eng-air_report/interim20241225-JA722A_JA13XJ.pdf (English)